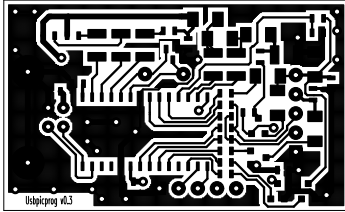
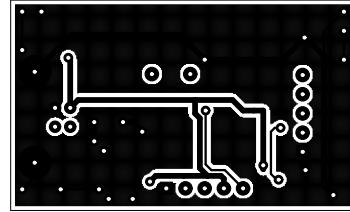


Usbpicprog PCB

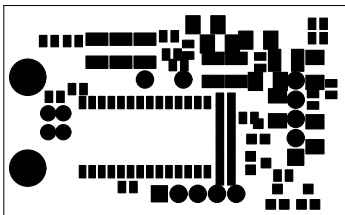
Top layer



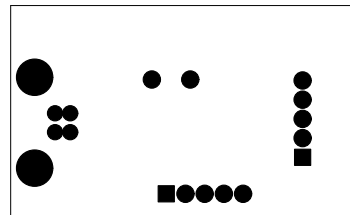
Bottom Layer



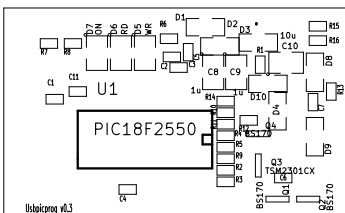
Top copper



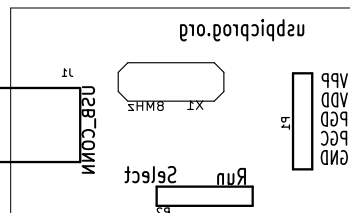
Bottom copper



Top mask



Bottom mask



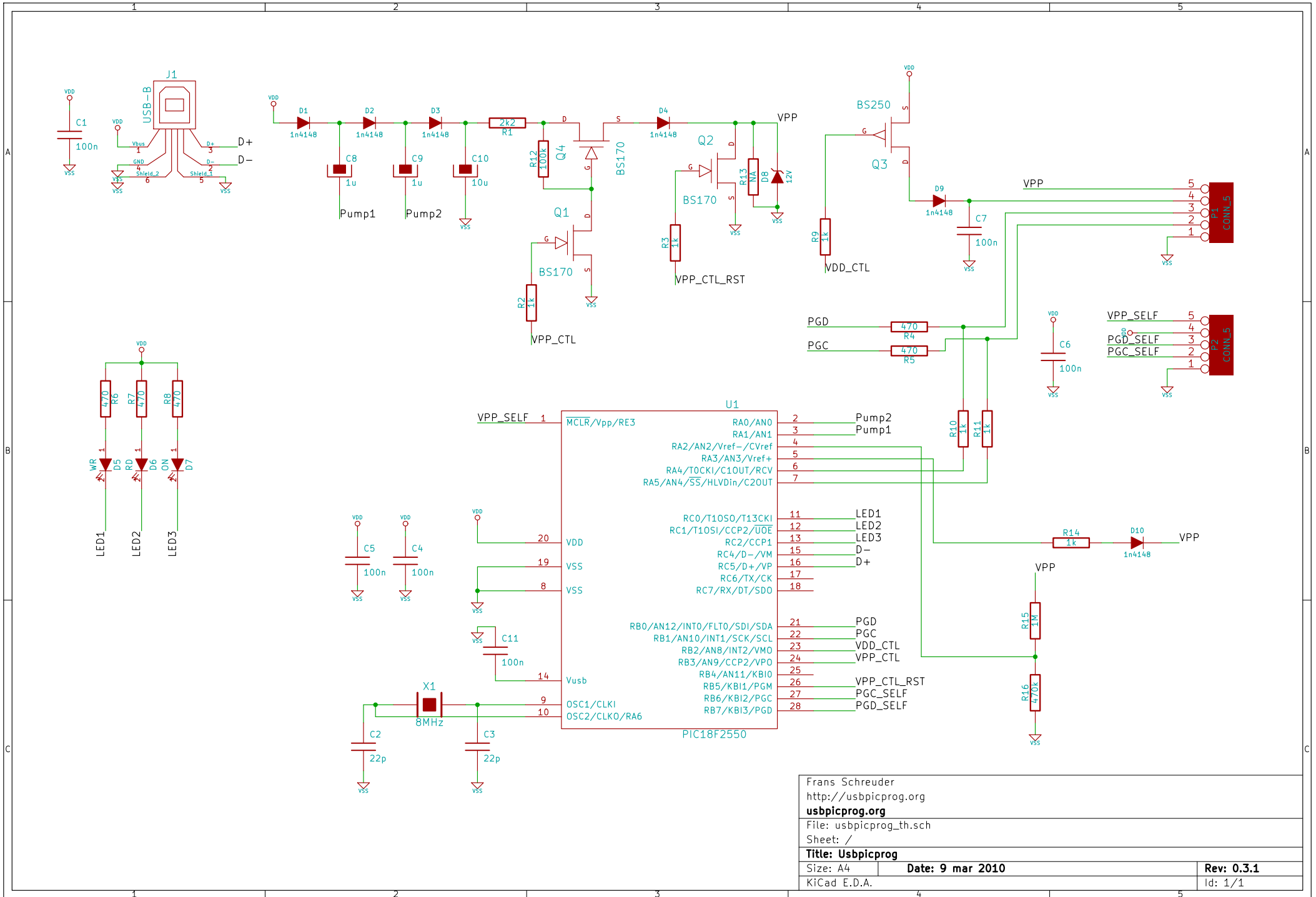
Top silk



Bottom silk



version 0.3.1

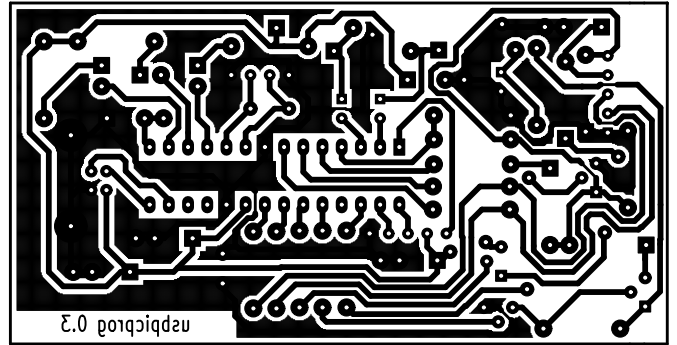
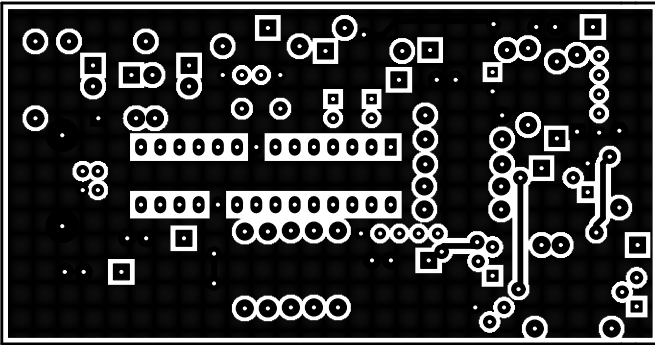


Frans Schreuder
<http://usbpicprog.org>
usbpicprog.org
 File: usbpicprog_th.sch
 Sheet: /
Title: Usbpicprog
 Size: A4 **Date: 9 mar 2010**
 KiCad E.D.A. **Rev: 0.3.1**
 Id: 1/1

Usbpicprog through hole PCB

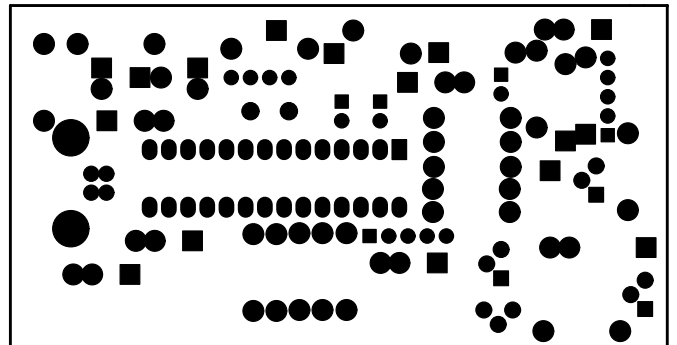
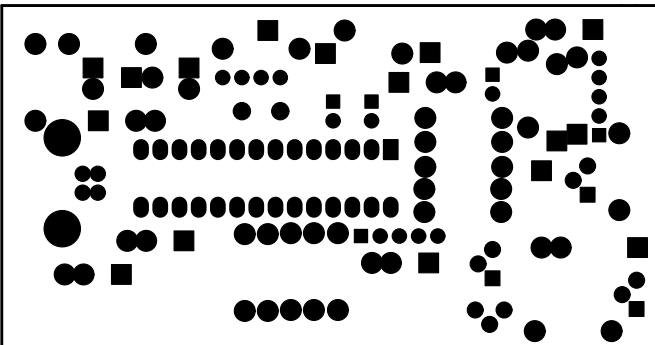
Top layer

Bottom Layer



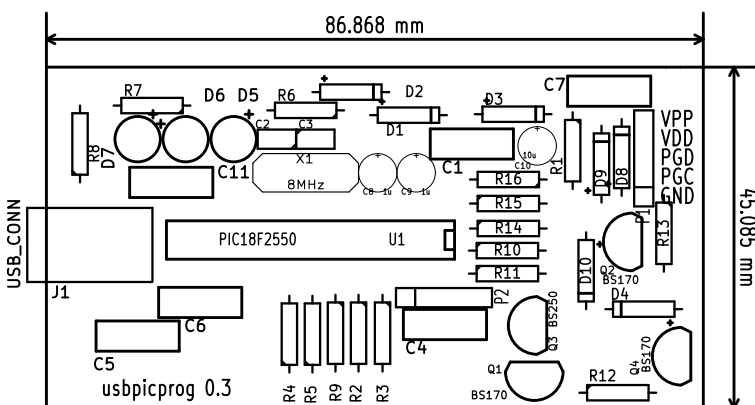
Top copper

Bottom copper



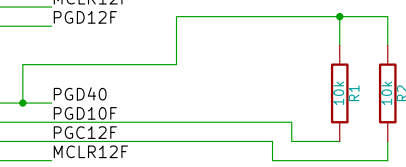
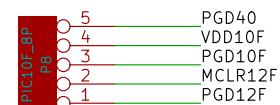
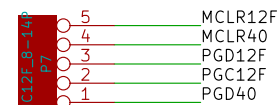
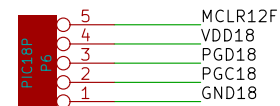
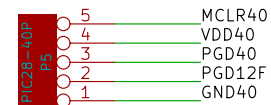
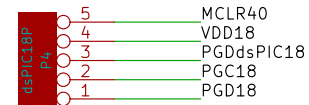
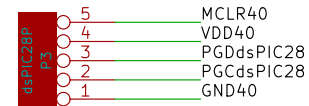
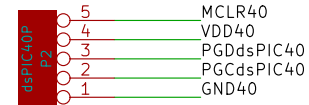
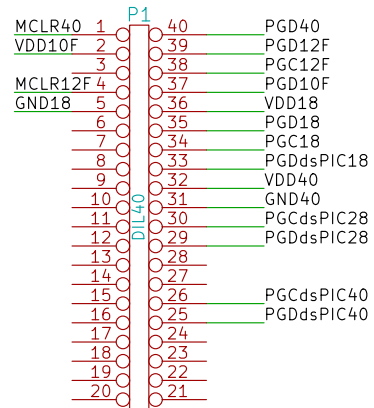
Top mask

Bottom mask



Top silk

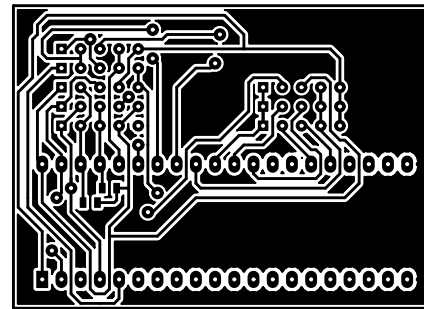
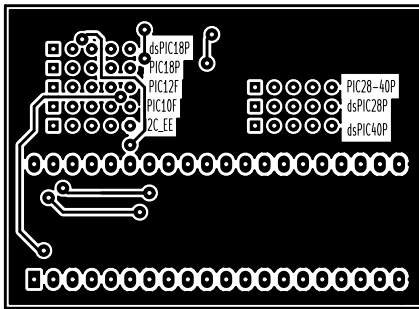
Bottom silk



Usbpicprog ZIF socket PCB

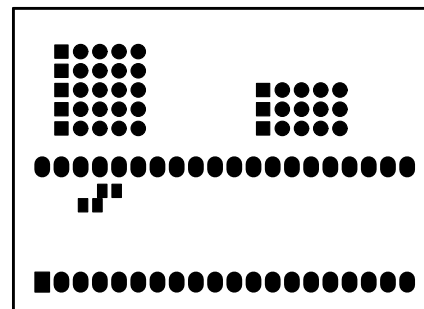
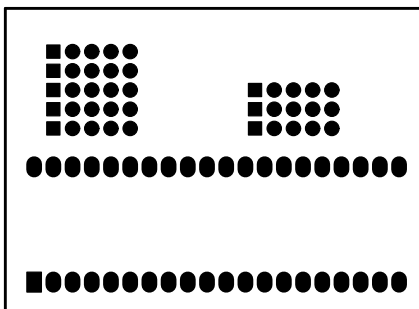
Top layer

Bottom Layer



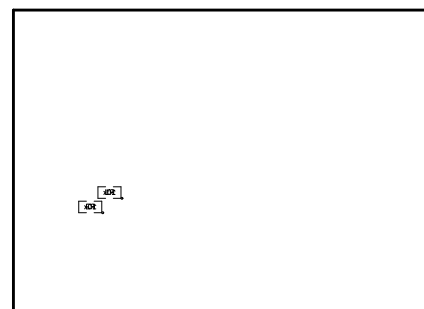
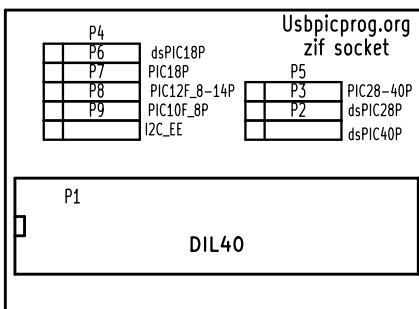
Top copper

Bottom copper



Top mask

Bottom mask



Top silk

Bottom silk